

Hanshow Polaris

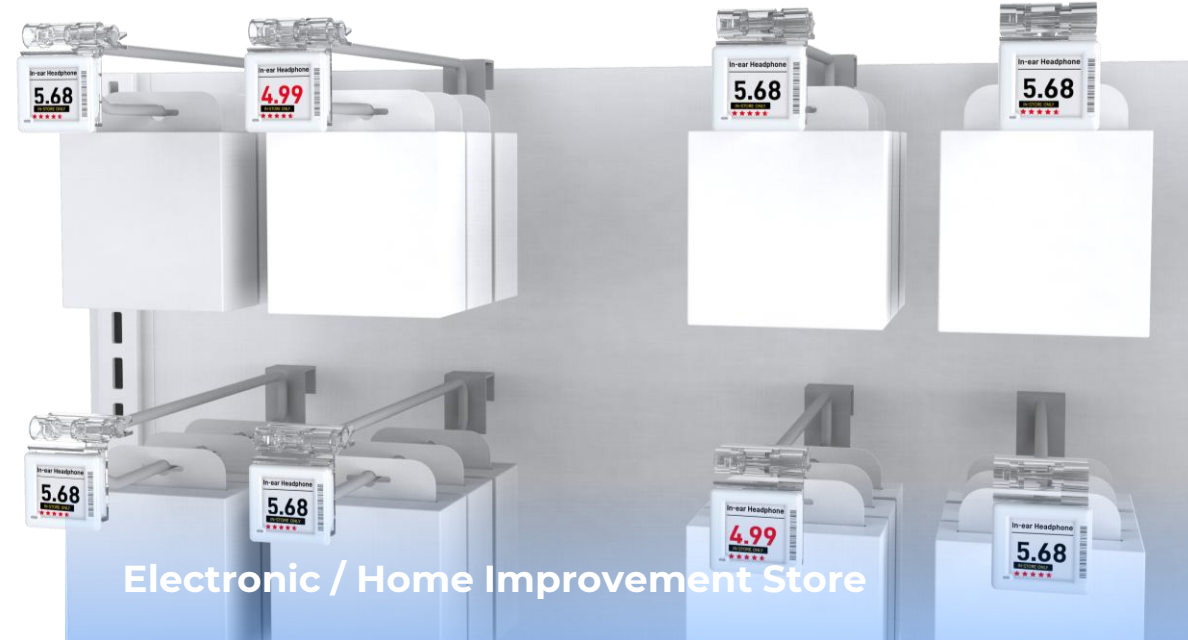
Making Every Update Count



Hanshow Polaris



Adapts to a variety of scenarios



Display more product information in limited space

Hanshow Polaris

9 Polaris

6854.4 mm²

Traditional ESL

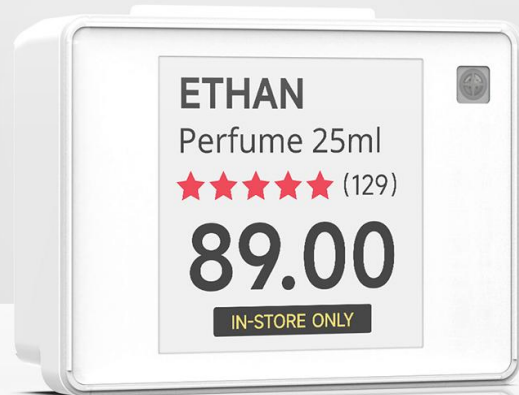
8.5 ESLs

6196.5 mm²



Clearer Display

「 With lens」
Traditional ESL 1.54”



「 Without lens」
Polaris 1.60”





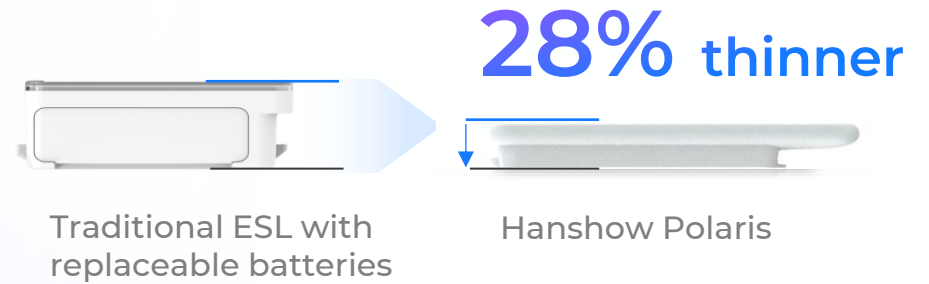
Laser engraved barcode

Precision laser engraving process for ESL barcodes
Anti-shedding, anti-corrosion and easy to bind



Pull and release, easier than ever to change batteries

Thinner design with replaceable batteries



Single battery with up to **10 years** of battery life

Industrial Grade **LiMnO₂ Battery**
Ultra-low self-discharge rate



0~40°C
Suitable for refrigerated & room
temperature

Proprietary **SIP chips**
15% reduction in power consumption

8 pages of storage space

7-color flashing light

freely switch between various contents and various colors of flashing lights to display rich information

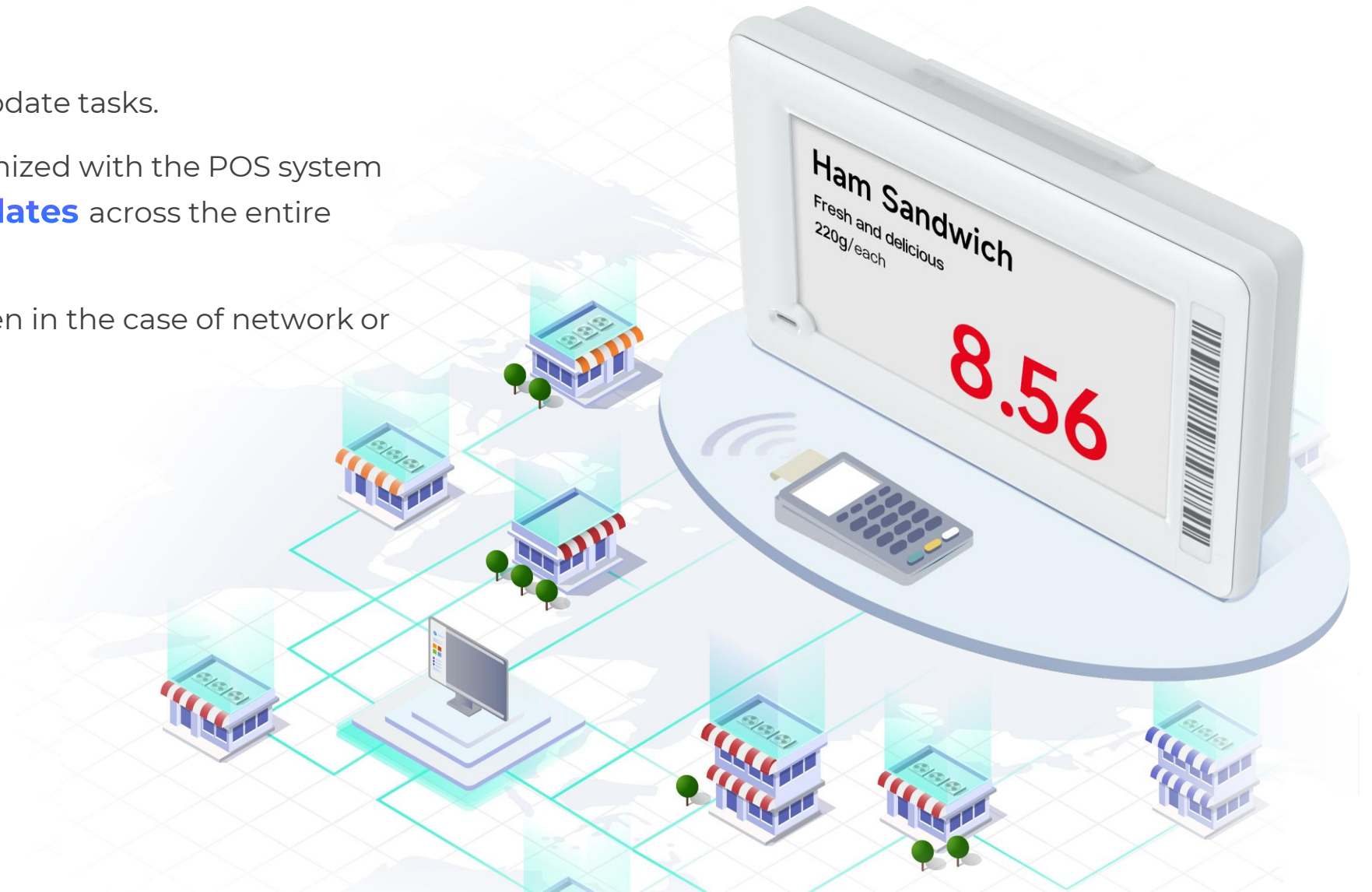


Timing Update

Millisecond-level timed update tasks.

Precise price changes synchronized with the POS system for **fast & high-volume updates** across the entire store network.

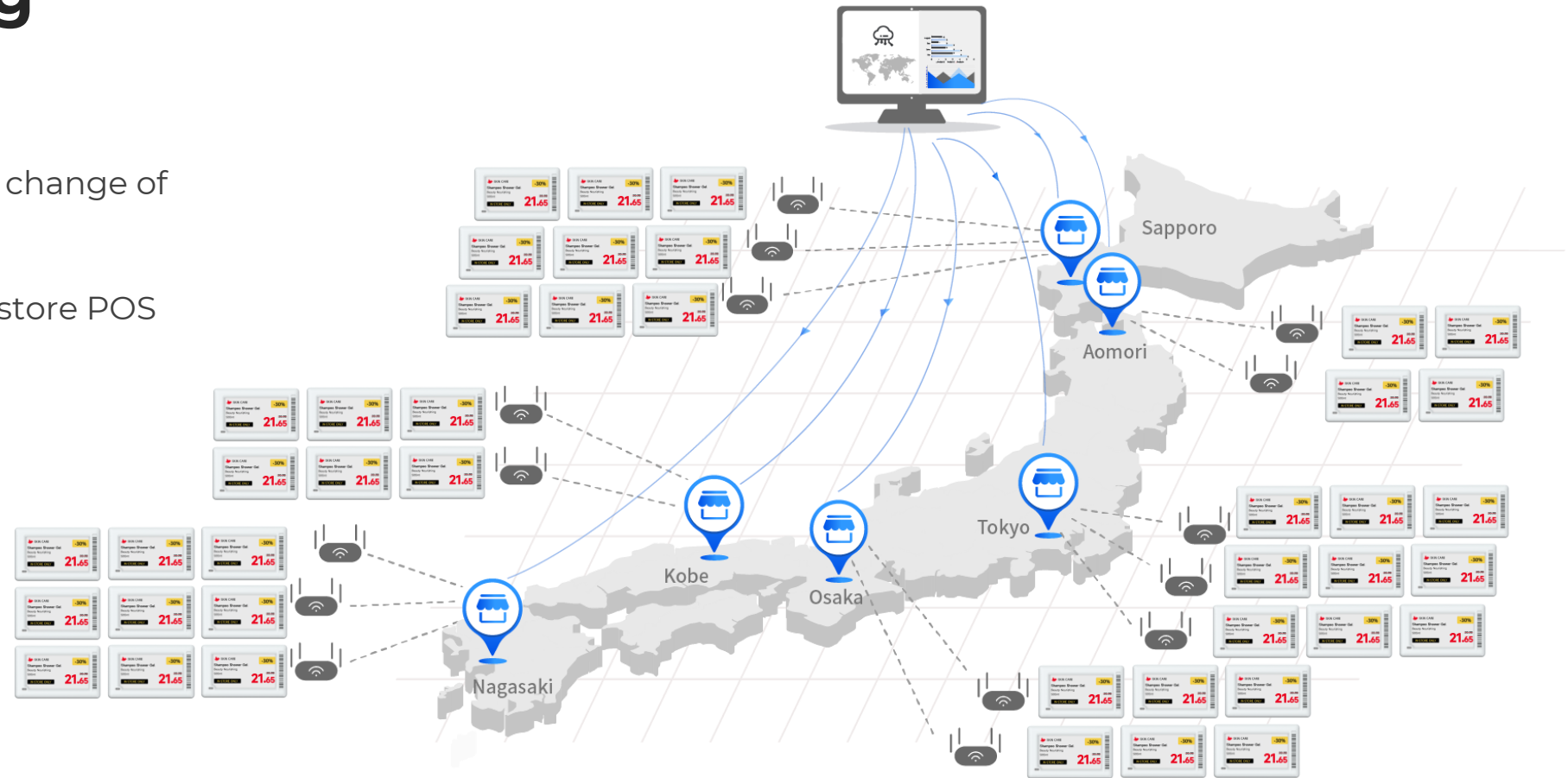
Updates can be completed even in the case of network or power failure.



Unified Pricing

Supports synchronized price change of **millions of ESLs**

Supports synchronization of store POS systems



“Giant corporations can update millions of ESLs globally within 30 minutes.”

Hanshow ESL Controller — USB Dongle





- Bi-Color LED Indicator
- Security protection: data transmission using SSL connection and AES256 encryption algorithm
- Operating frequency band: 2402~2480MHz (support frequency hopping technology)
- Omni-directional antenna design, supports multiple antennas for parallel communication
- Equipped with 3 high-performance signal amplifiers
- Communication distance: wireless transmission coverage radius 25m
- Transmission Rate: 10/100M adaptive
- Supports plug-and-play and can be configured through the cloud platform for unified management
- Supports remote firmware upgrade
- Supports real-time status reporting and monitoring
- Supports automatic cellular network establishment for maximum concurrent communication

* The data involved are the results of calculations of average values measured by Hanshow Laboratory under simulated specific environments, and some parameters and functions may vary according to the actual product models and usage environments.

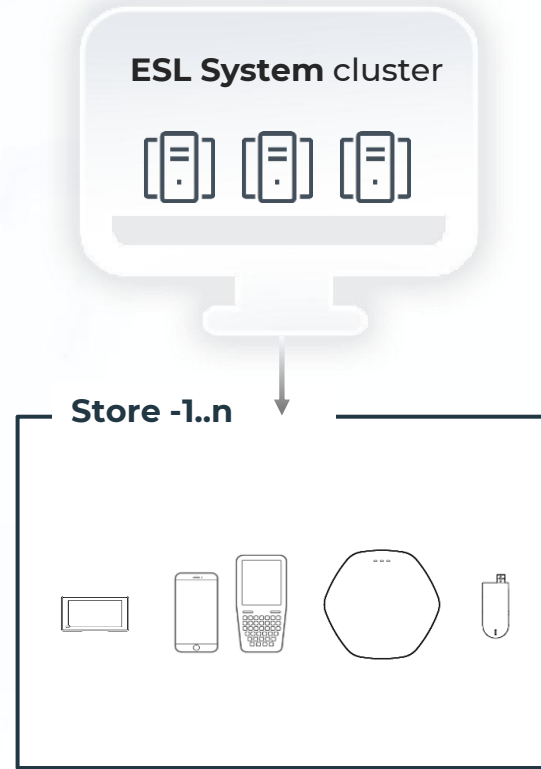


Simple deployment and ease of use

- Supports multi-platform adaptation, including Wi-Fi AP, PC, cash register, industrial control machine, etc.
- Supports multi-user (store) hierarchical management
- Support the operation of ESLs by mobile APP  

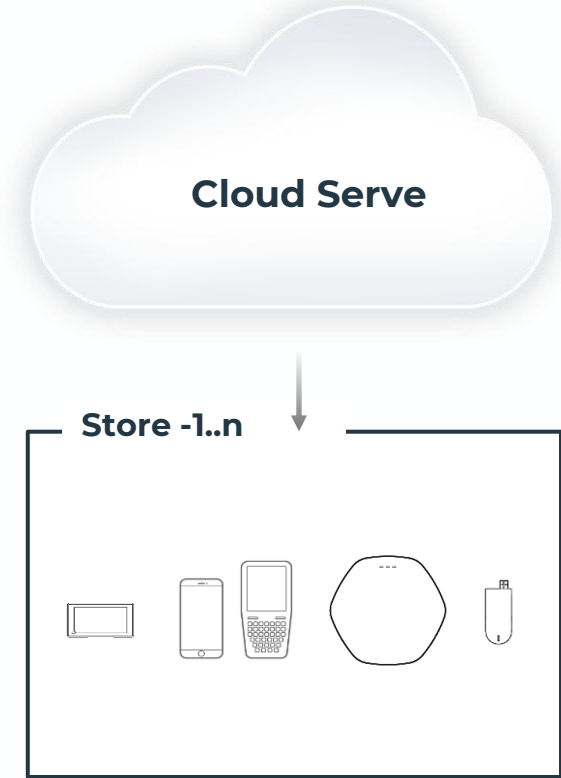
Application Scenario

Centralize



- There is a data center, which is responsible for the business scheduling of each store
- ERP data is sent to the data center

SaaS



- Stores only need AP(USB Dongle)
- ERP data is sent to the SaaS

Hanshow ESL Controller — USB Dongle



The following WIFI APs are supported (with external USB port):

- [Cisco](#) C9120
- [Meraki](#) MR57/CW9166I/CW9164I/CW9162I
- [Extreme](#) AP-8432i/AP310i/e,AP460C/
AP410i/e,AP305C,AP302W
- [Aruba](#) 3XX/5XX/6XX With USB Port
- [Fortinet](#) FortiAP 421E/423E/431F/433F/231F
- [LANCOM](#) LX-6400
- [Ruckus](#) R350/R550/R650/R750/R850
- [Juniper\(MIST\)](#) AP33/AP43/AP45
- [HUAWEI](#) AirEngine series APs with an external USB port
- [H3C](#) WA5320I
- [SUNDRAY](#) NAP-1700

*In addition to the above brands, we also support the integration and interfacing of other wireless brands.

Hanshow



Hanshow Technology Co., Ltd. | Tel – 400 0365 305 | info@hanshow.com | www.hanshow.com

Hanshow Technology Co., Ltd. hereby declares and reserves the final explanation right and other irrevocable and exclusive rights with respect to all contents contained in this promotional document, including but not limited to the right to explain or determine the meaning, scope and applicability of any of the terms, provisions and regulations contained herein and to resolve any disputes or discrepancies in relation thereto; without the prior written consents of Hanshow Technology Co., Ltd., no other party shall have the right to explain or modify the contents hereof.

This promotional document is made as comprehensive and detailed as possible based on the existing information. However, Hanshow Technology Co., Ltd. reserves the right to modify the price, color, equipment, parameters, etc. without further notice.

The color of the products in this promotional document are slightly different from the actual product due to shooting and printing reasons. The images are for reference only; the actual products serve as the standard. This promotional document shall be valid until December 31st, 2025